

Figure 1: Regional Location and Project Vicinity Map

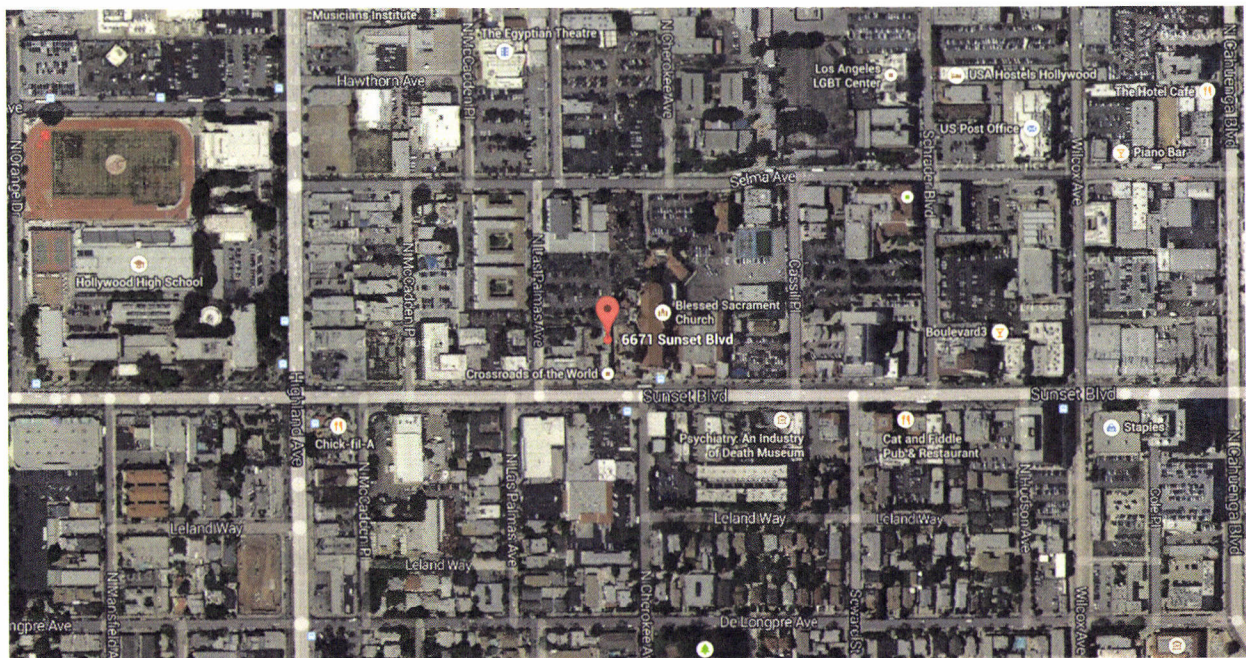


Figure 2: Aerial Photograph



Photograph 1: View of Existing Crossroads of the World from Sunset Boulevard



Photograph 2: View of Northeast corner of Sunset Boulevard and Las Palmas Avenue



Photograph 3: View of Eastern side of Las Palmas Avenue



Photograph 4: View of existing Crossroads of the World Parking Lot on Las Palmas Avenue



Photograph 5: View of existing Crossroads of the World from Selma Avenue



Photograph 6: View of Northeast corner of Selma Avenue and Las Palmas Avenue



Photograph 7: View of Northeast corner of Selma Avenue and Las Palmas Avenue



Photograph 8: View of Northwest corner of Sunset Boulevard and Las Palmas Avenue



Photograph 9: View of Western side of Las Palmas Avenue



**Photograph 10: View of Western side of Las Palmas Avenue**



**Photograph 11: View of Southeast corner of Selma Avenue and Las Palmas Avenue**



**Photograph 12: View of Southern side of Selma Avenue near McCadden Place**



Photograph 13: View of Southern side of Selma Avenue



Photograph 14: View of Southeast corner of Selma Avenue and Highland Avenue



Photograph 15: View of Eastern side of Highland Avenue



Photograph 16: View of Eastern side of Highland Avenue



Photograph 17: View of Eastern side of McCadden Place



Photograph 18: View of Northeast corner Selma Avenue and McCadden Place



Photograph 19: View of Western side of McCadden Place



Photograph 20: View of North side of Sunset Boulevard



Photograph 21: View of South side of Sunset Boulevard across from Project Site





Photograph 22: View of Southeast corner of Sunset Boulevard and Las Palmas Avenue



Photograph 23: View of Northeast corner of Sunset Boulevard and McCadden Place



Photograph 24: View of Northeast corner of Sunset Boulevard and Highland Avenue



**Photograph 25: View of West side of Highland Avenue**



**Photograph 26: View of North side of Selma Avenue between Highland Avenue and McCadden Place**



**Photograph 27: View of North side of Selma Avenue at McCadden Place**



Photograph 28: view of Northwest corner of Selma Avenue and Las Palmas Avenue